

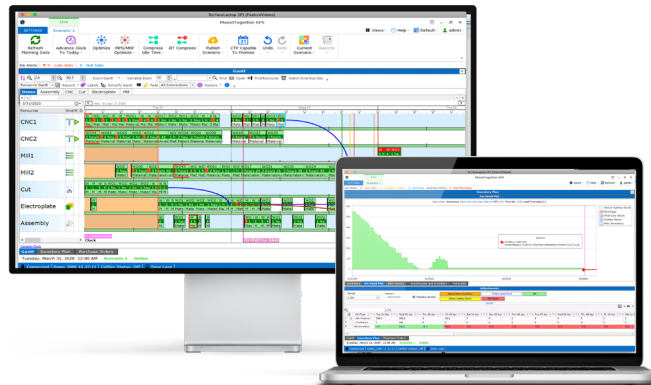
# Production Planning & Scheduling

by PlanetTogether for AVEVA



## World's Leading Planning & Scheduling Platform

PlanetTogether is the rapid-to-implement and easy-to-use visual planning and scheduling solution for manufacturers. PlanetTogether resolves production constraints and creates KPI-driven schedules automatically. Integration with AVEVA Manufacturing Execution System allows for feasible production plans based on actual plant capacity and material availability and for an optimized production schedule that balances business KPI's with operational constraints.



## Digital Transformation of Planning & Scheduling

Automation of operational planning and scheduling, tied to production, improves delivery performance, efficiencies, and work environment.

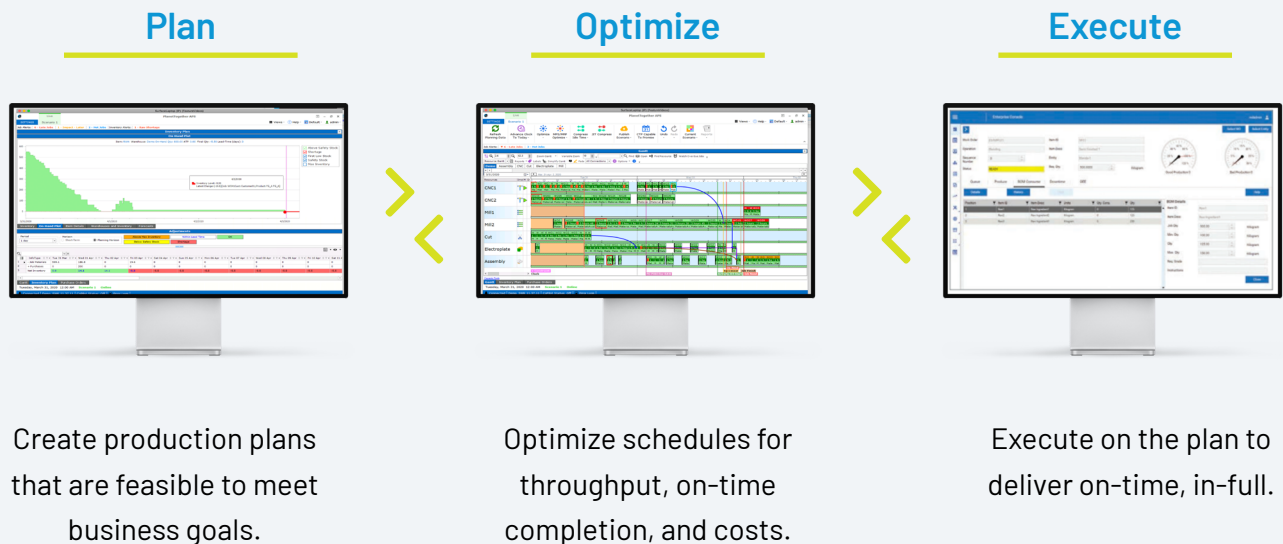
- + **Constraint-Based Scheduling** - Create accurate schedules in seconds, automatically taking all critical constraints into consideration including finite resource capacity, raw and intermediate material availability, and any special sequencing rules.
- + **Production Planning** - With a single click, generate material and production plans that satisfy demand while taking planning rules and constraints into account.

- + **Flexible Optimization Rules** - Generate plans based on adjustable rules to optimize business goals such as “on-time delivery”, “profitability”, and “efficiency”.
- + **Real-time Team-wide Visibility** - Provide your teams with always-current schedule visibility that is updated in real-time by production feeds, resource status, and demand changes.
- + **Capable To Promise (CTP)** - Respond quickly to your customers with accurate ship date promises that take all constraints into account across your plant network.
- + **What-If Scenarios & Impact Analysis** - Quickly create and compare planning scenarios to understand both the high-level KPI and detailed impact of proposed changes to your plans.
- + **SuperPlant™ multi-site Optimization** maximizes customer service and productivity by creating schedules synchronized across your plants to perform as one unified SuperPlant™.

## Manufacturing Planning and Execution Optimization

### Powered by PlanetTogether integrated with AVEVA MES

To fully optimize the value chain requires that supply chain S&OP plans are feasible, based on actual plant conditions, across the entire manufacturing network, with execution that is dynamically optimized to balance business needs with operational constraints. Within the plants, manufacturing operations must be continuously optimized to minimize losses, in an agile worker-enabling system.



## Benefits of Advanced Planning & Scheduling Enabled Manufacturing

- + Greater agility and customer responsiveness driven by a quick and standard scheduling process that takes minutes not hours or days.
- + Improved on-time delivery driven by clear capacity and order visibility that identifies and overcomes material and capacity bottlenecks early.
- + Higher output on critical resources due to efficient sequencing to minimize changeover downtime.
- + Reduced raw and work-in-process (WIP) inventory resulting from tightly controlled purchase and work release that is synchronized with downstream capacity availability.
- + Continuous improvement accelerated by greater accountability in manufacturing based on realistic production schedule achievement.



**The shift to Planet Together is saving us about 15 percent in inventory overhead and about 20 percent in overtime labor expenses. We're not building equipment to stock any longer—we're building to ship!"**

*Bruce Hays, Director of Manufacturing, J&J Synthes*

**Contact Aveva today to see the Possibilities**

For more information please visit: [www.aveva.com/en/products/planettogether-aps/](http://www.aveva.com/en/products/planettogether-aps/)